

## Commissioning for Outcomes in Leeds: CareTrak and Community Beds

Will Ridge: Leeds Intelligence Hub



# Who we are

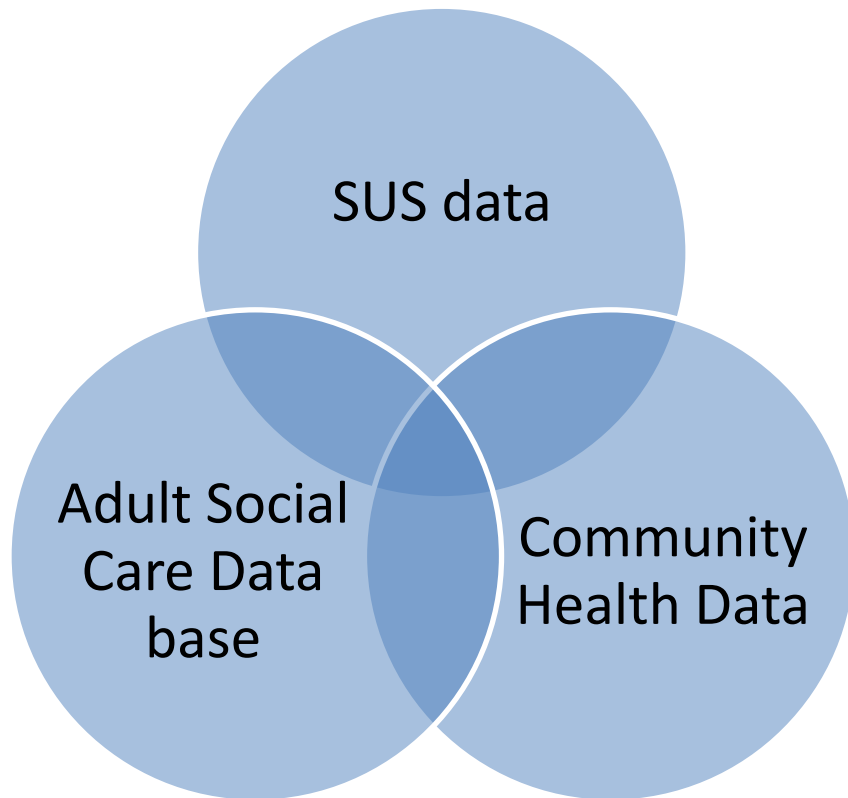
Stuart Cameron-Strickland, Head of Policy & Performance, ASC, Leeds City Council



Will Ridge, Leeds Intelligence Hub (Leeds CCGs & Leeds City Council)



# The building blocks of integrated data




- Local integration strategy and infrastructure
- Information Governance Toolkit
- N3 NHS network
- NHS Number
- Data Management Integration Centre



# The Use of CareTrak in Leeds

## Commissioning:

- Development of policies and services;
  - To Monitor and improved outputs from services;
  - To improved outcomes and the effectiveness of services;
  - To test the value for money of services.
- 



# Community Intermediate Care Beds in Leeds

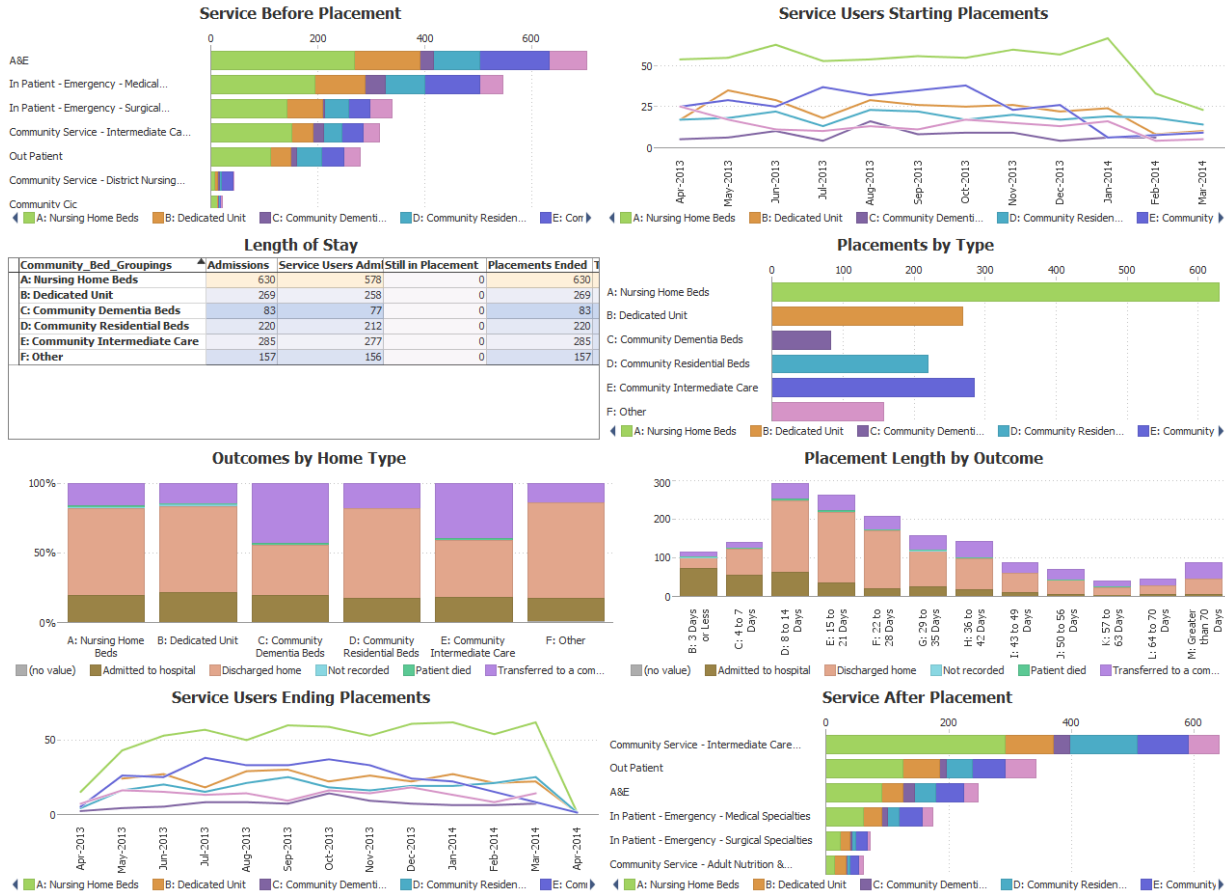
- April 2013- Opening of new dedicated community intermediate care facility;
- Introduction of a Leeds Community Beds Strategy.



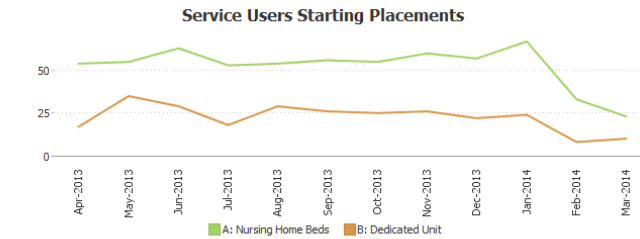
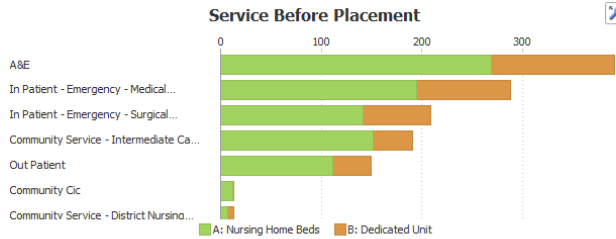
# Use of CareTrak

- Understanding baselines/ agreeing objectives
- How much did we do?
  - Activity
  - Finance
- How well did we do it?
  - Agreeing targets
  - Benchmarking
- Is anyone better off?
  - Whole systems & service outcomes
  - Informing improvements

# CareTrak: Demo- Front Page

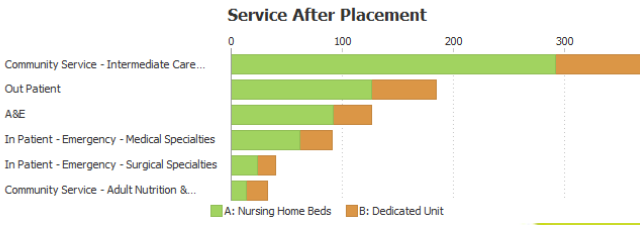
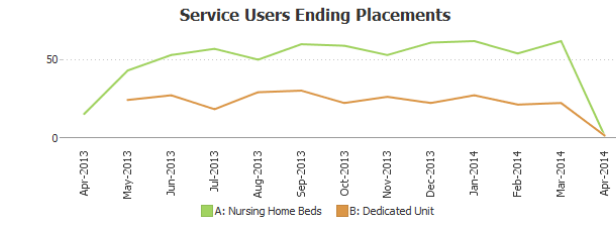
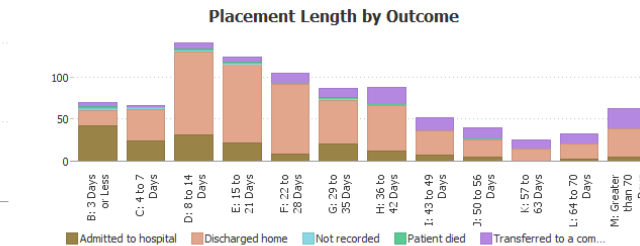
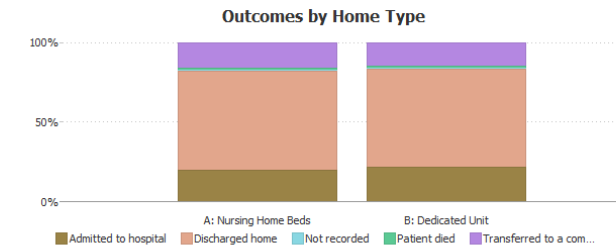
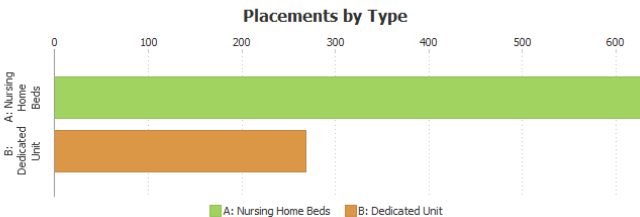


# CareTrak: Demo- Front Page



### Length of Stay

Community_Bed_Groupings	Admissions	Service Users Adm/Still in Placement	Placements Ended
A: Nursing Home Beds	630	578	630
B: Dedicated Unit	269	258	269





# CareTrak: Demo- 3, 6 12 Months Later

Service User Settings and Services Three Months After Placement End

Community Bed Groupings	Discharges	No further Services	Home Care		Community CIC		Residential		Nursing		A&E		Inpatient-Emergency		Service User Died		
A: Nursing Home Beds	671	38	5.7%	118	17.6%	103	15.4%	25	3.7%	28	4.2%	244	36.4%	258	38.5%	84	12.5%
B: Dedicated Unit	287	17	5.9%	44	15.3%	38	13.2%	13	4.5%	7	2.4%	93	32.4%	98	34.1%	39	13.6%
C: Community Dementia Beds	89	7	7.9%	14	15.7%	7	7.9%	15	16.9%	6	6.7%	28	31.5%	28	31.5%	4	4.5%
D: Community Residential Beds	235	12	5.1%	22	9.4%	28	11.9%	13	5.5%	8	3.4%	85	36.2%	86	36.6%	16	6.8%
E: Community Intermediate Care	297	20	6.7%	43	14.5%	36	12.1%	16	5.4%	17	5.7%	124	41.8%	127	42.8%	34	11.4%
F: Other	170	10	5.9%	17	10.0%	22	12.9%	5	2.9%	7	4.1%	54	31.8%	57	33.5%	18	10.6%

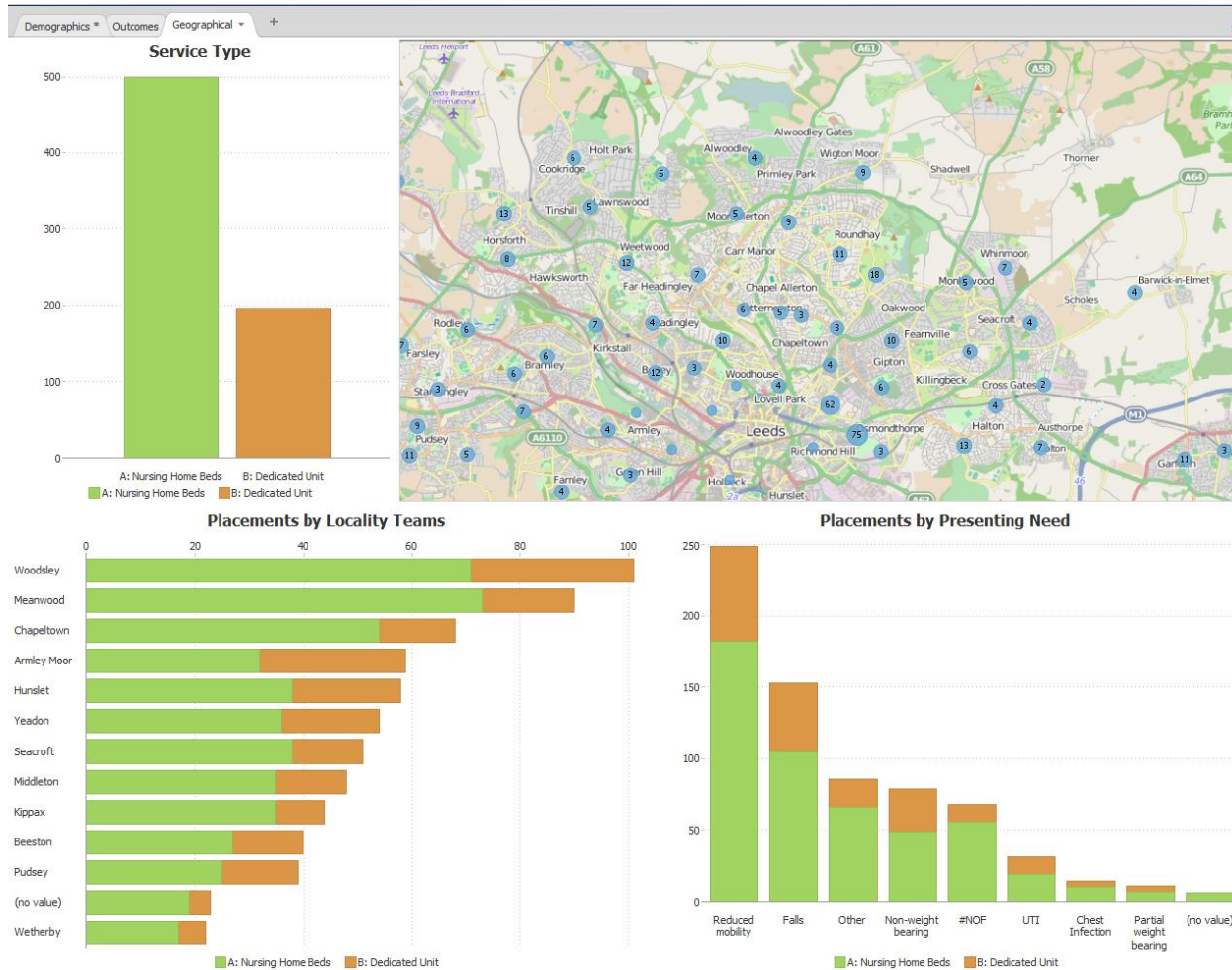
Service User Settings and Services Six Months After Placement End

Community Bed Groupings	Discharges	No further Services	Home Care		Community CIC		Residential		Nursing		A&E		Inpatient-Emergency		Service User Died		
A: Nursing Home Beds	671	24	3.6%	140	20.9%	117	17.4%	36	5.4%	35	5.2%	307	45.8%	315	46.9%	130	19.4%
B: Dedicated Unit	287	12	4.2%	50	17.4%	43	15.0%	19	6.6%	10	3.5%	125	43.6%	125	43.6%	57	19.9%
C: Community Dementia Beds	89	5	5.6%	15	16.9%	10	11.2%	19	21.3%	8	9.0%	40	44.9%	37	41.6%	11	12.4%
D: Community Residential Beds	235	6	2.6%	29	12.3%	37	15.7%	16	6.8%	11	4.7%	117	49.8%	116	49.4%	29	12.3%
E: Community Intermediate Care	297	17	5.7%	59	19.9%	45	15.2%	25	8.4%	22	7.4%	154	51.9%	159	53.5%	52	17.5%
F: Other	170	7	4.1%	22	12.9%	27	15.9%	6	3.5%	8	4.7%	70	41.2%	71	41.8%	27	15.9%

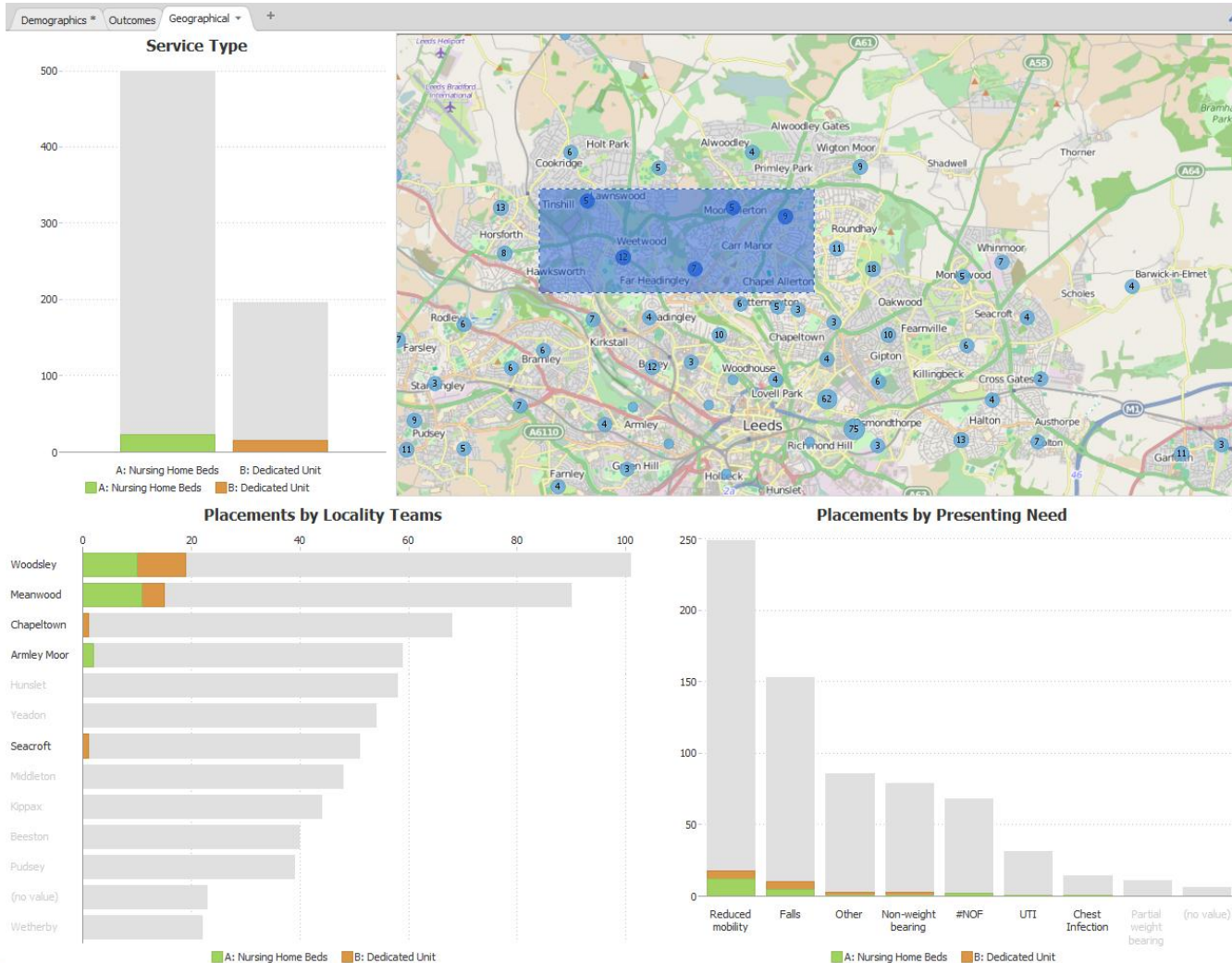
Service User Settings and Services Twelve Months After Placement End

Community Bed Groupings	Discharges	No further Services	Home Care		Community CIC		Residential		Nursing		A&E		Inpatient-Emergency		Service User Died		
A: Nursing Home Beds	671	21	3.1%	151	22.5%	126	18.8%	43	6.4%	40	6.0%	346	51.6%	350	52.2%	168	25.0%
B: Dedicated Unit	287	10	3.5%	58	20.2%	52	18.1%	22	7.7%	11	3.8%	148	51.6%	144	50.2%	71	24.7%
C: Community Dementia Beds	89	4	4.5%	15	16.9%	10	11.2%	20	22.5%	9	10.1%	51	57.3%	48	53.9%	18	20.2%
D: Community Residential Beds	235	6	2.6%	35	14.9%	52	22.1%	17	7.2%	13	5.5%	132	56.2%	134	57.0%	38	16.2%
E: Community Intermediate Care	297	15	5.1%	65	21.9%	63	21.2%	30	10.1%	27	9.1%	179	60.3%	183	61.6%	69	23.2%
F: Other	170	7	4.1%	24	14.1%	29	17.1%	10	5.9%	9	5.3%	86	50.6%	83	48.8%	30	17.6%

# CareTrak: Demo- Everyone Loves a Map



# CareTrak: Demo- Everyone Loves a Map





## Next steps:

- Understand the longer term benefits of programmes;
- Financial benefit and potential savings;
- Help with further target setting.



# Questions/ Comments?

