

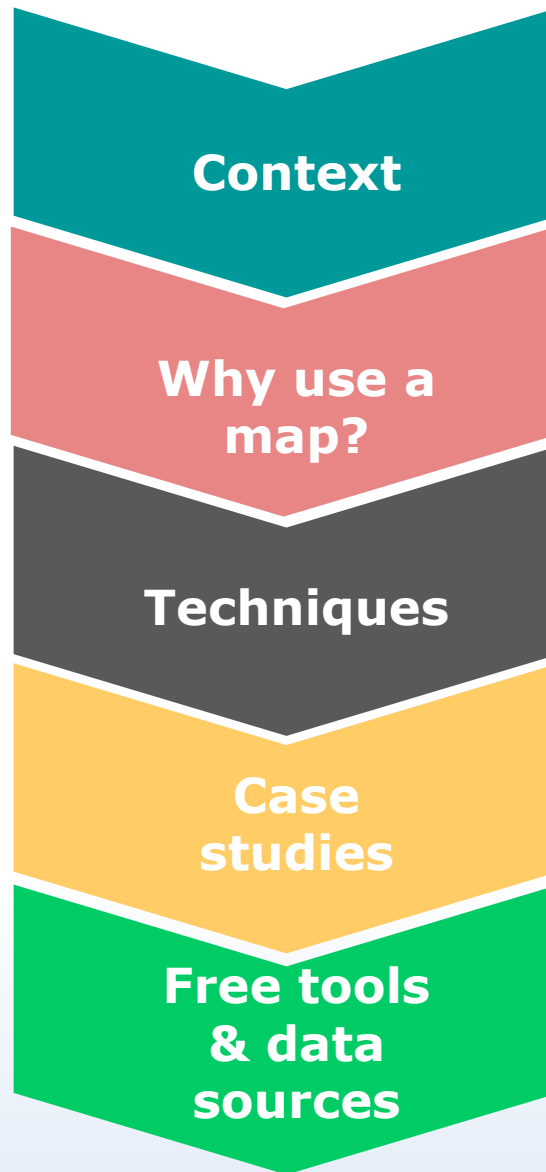


MORE THAN JUST A MAP

— Using maps for research —

Andrew Fitzpatrick

Structure



Context

'It is estimated that approximately 80% of the informational needs of a local government policymaker is related to a Geographical Location'

Williams (1987)

Context

'Everything happens somewhere' so almost anything can be mapped!

Append non-spatial data



Points

Postcodes

Places

Individual Addresses

Coordinates

Lines & Regions

Political Boundaries

Physical Features

Postcode Area

Catchments

ONS Geographies

Land Ownership

Why use a map?

Recording & Storing information

- **Geographical Information System (GIS)**

Analysing locational distribution & patterns

Questions

- Service provision?
- Resource targeting?
- Catchment gaps?

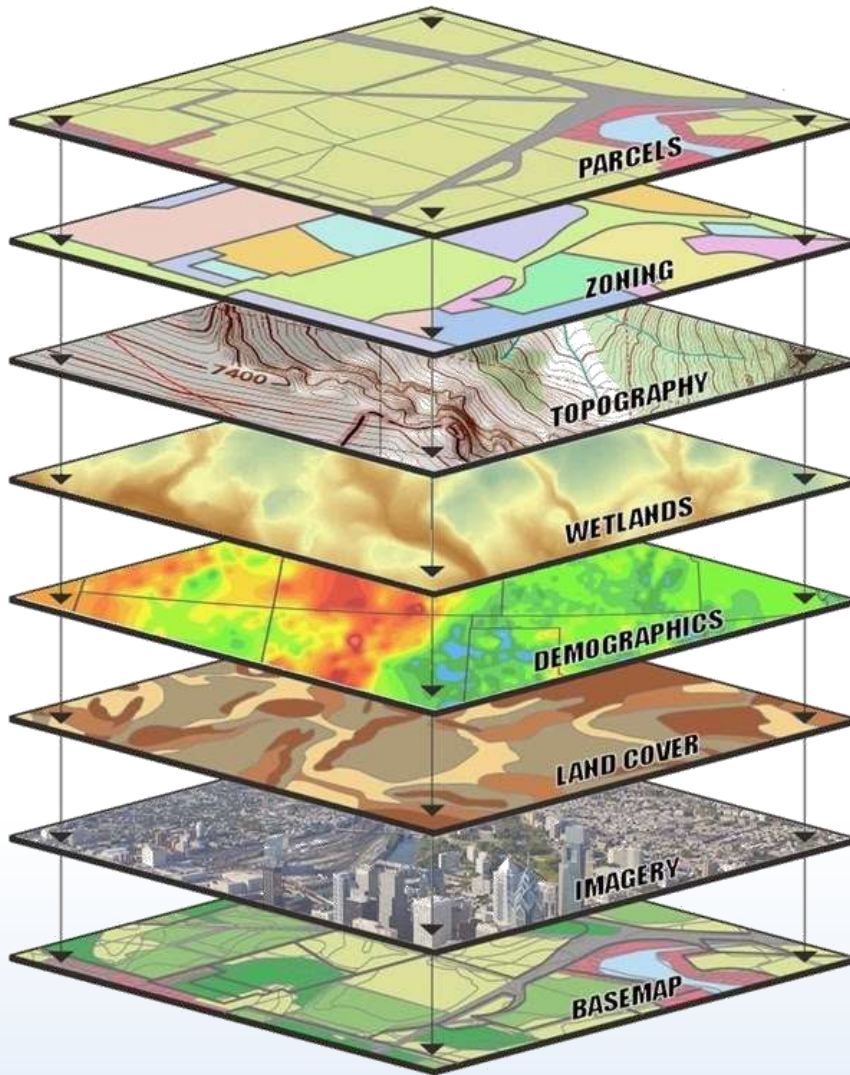
Techniques

- Asset maps
- Thematic maps
- Routing
- Produce catchments

Presenting Information & communicating findings

- **Simplify complex patterns**
- **Adding vital context**
- **Gain better insight**
- **Easy to relate to**
- **Create conversation**
- **Change perspective**

Why use a map?



Context



**Add layers to
build a
picture/profile**



**Easily
visualise
relationships**

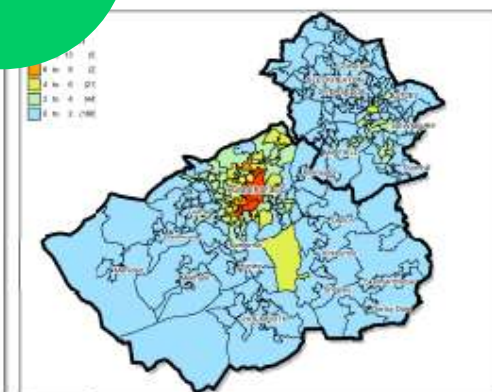
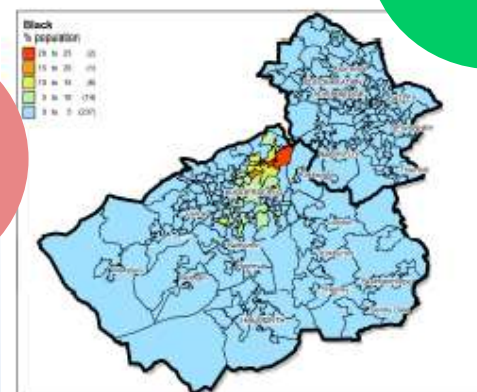
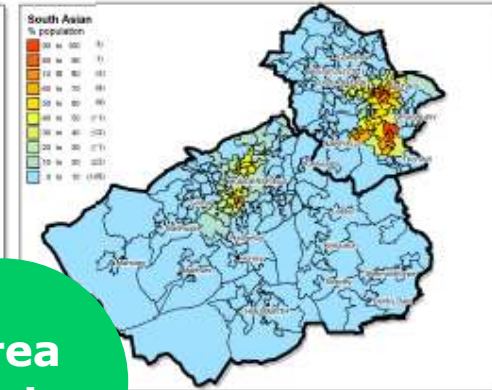
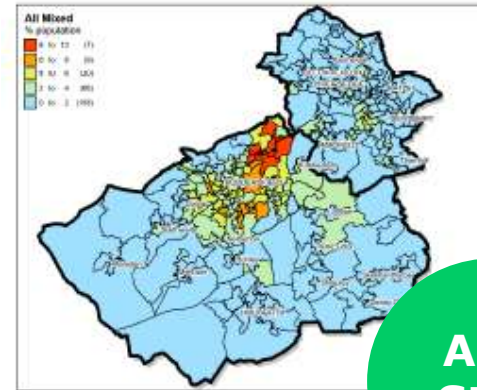
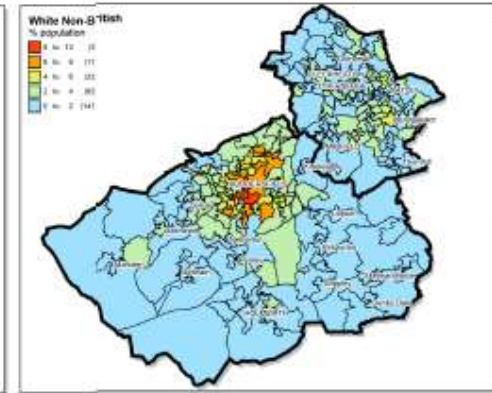
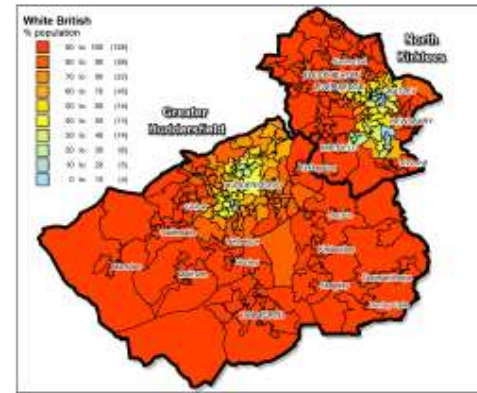
Techniques

Asset Mapping

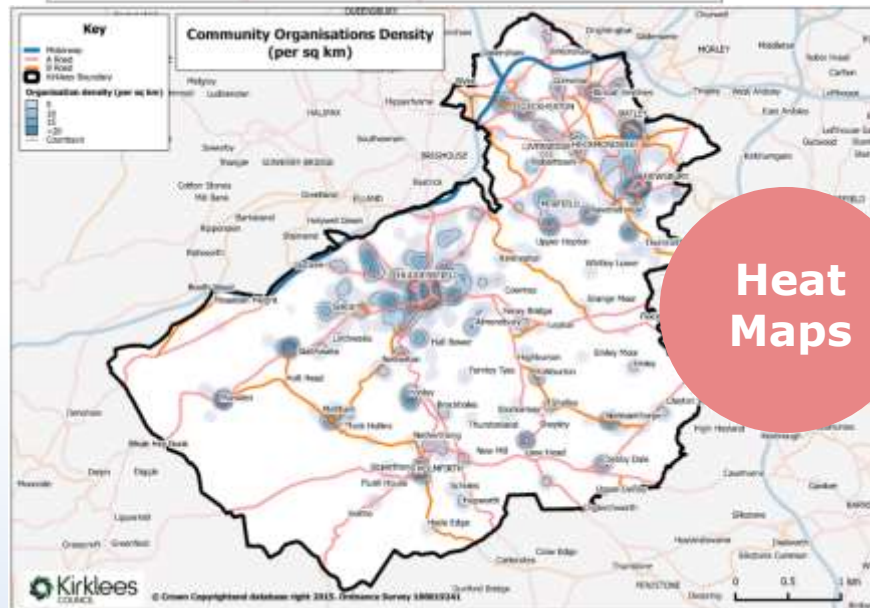
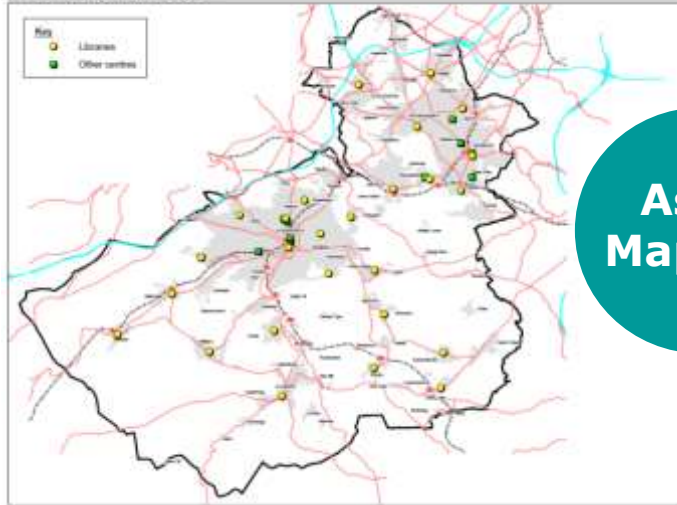
Heat Maps

Area Stats

Kirklees Ethnicity Maps - 2011 Census Data

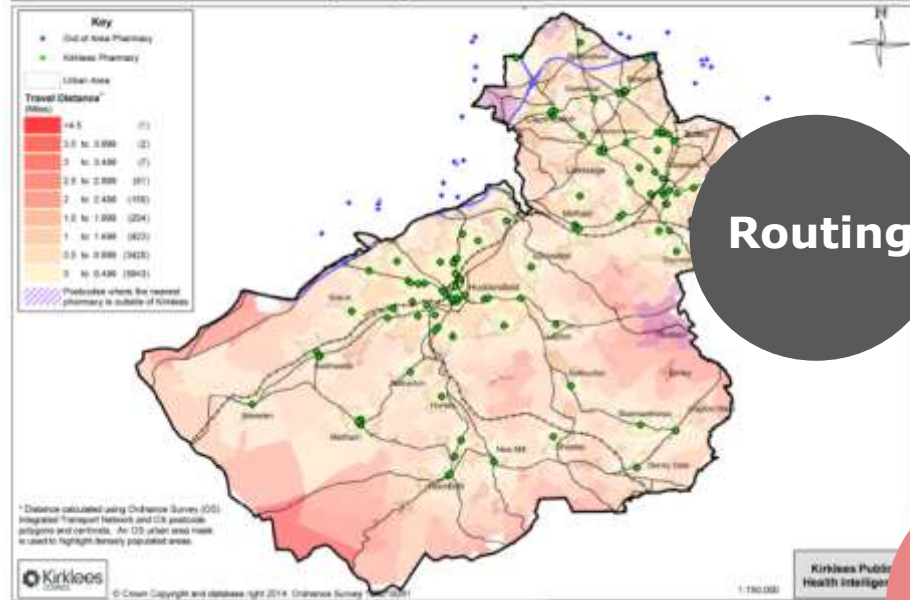


Free Internet Access Sites



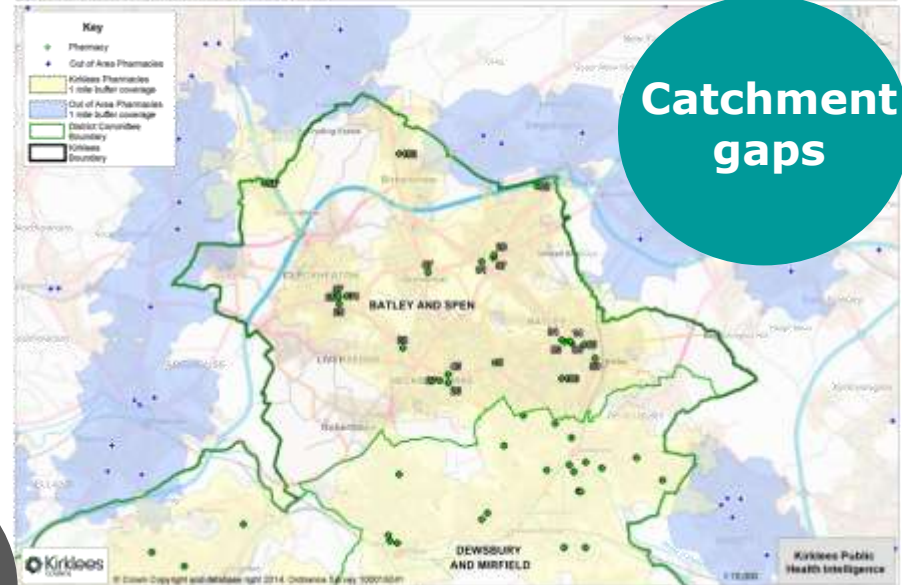
Techniques

Distance to nearest Pharmacy from postcode centroid

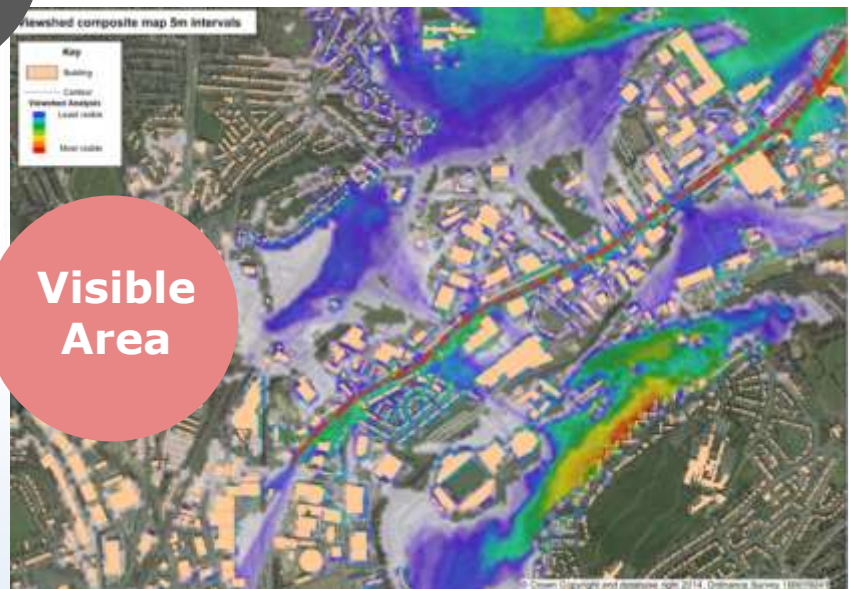


Routing

Batley and Spennings Pharmacies



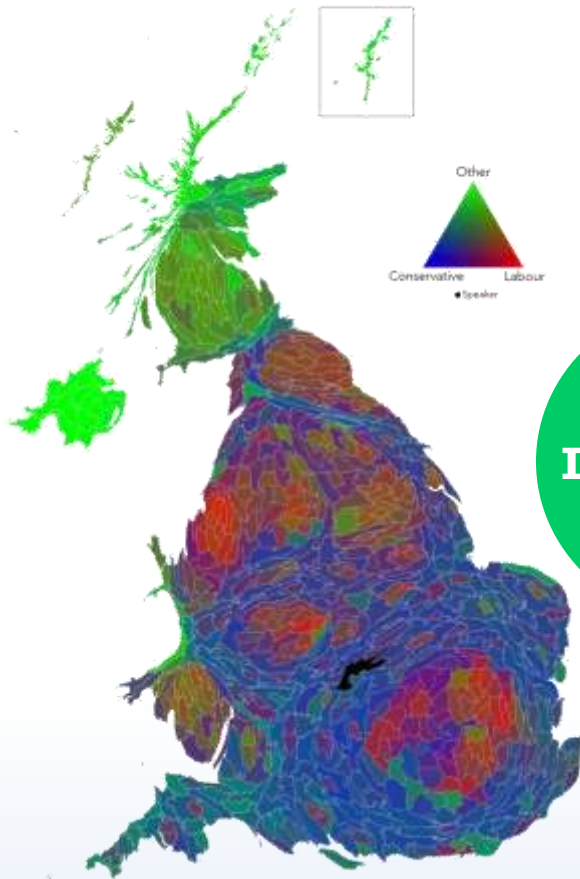
Catchment gaps



Visible Area

Techniques

The Colour of Votes 2015



spatial.ly/ @spatialanalysis

Infographics

Journeys to Work

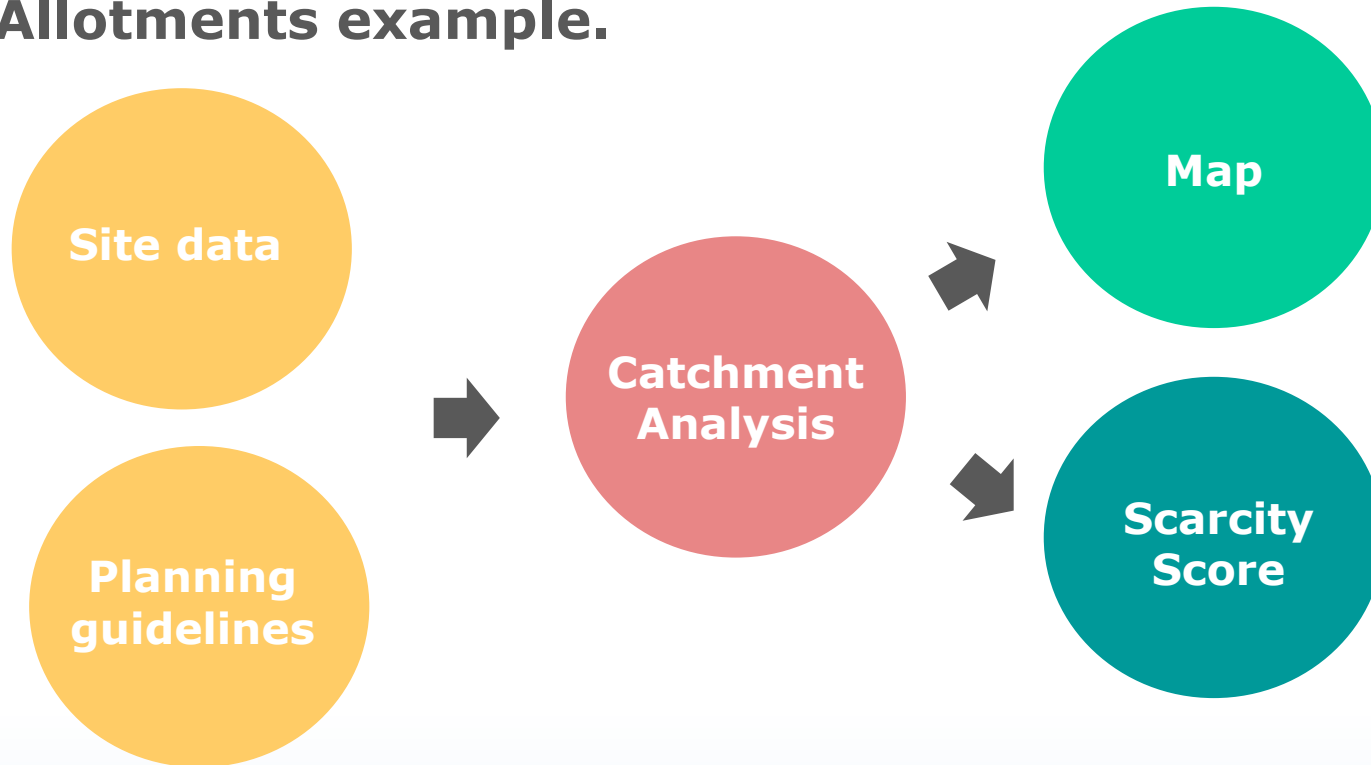
See yours at commute.datastine.org.uk
(Data: 2011 Census 500m)



Graphic: James Cheshire (@spatialanalysis) and Oliver O'Brien (@oodbr)

Case Study

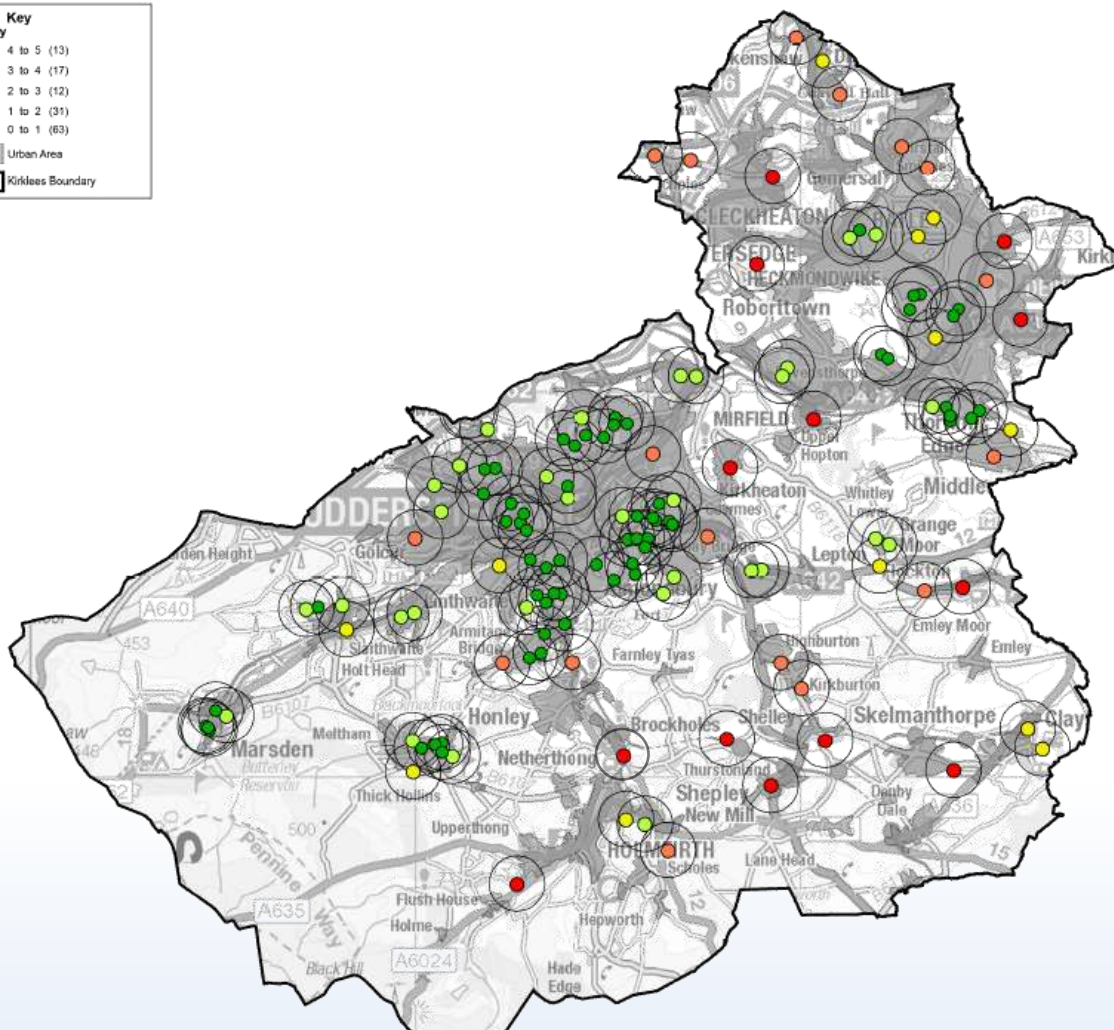
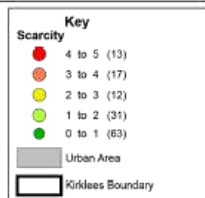
**How accessible are open spaces in Kirklees?
Allotments example.**



Each site assigned a score based on the proximity to nearby sites/shared catchment area. Results used in Local Plan to determine areas deficient in accessibility to open space.

Case Study

Allotment Scarcity Analysis August 2015



**Policy
Unit
Geographic
Research and
Information
Team**

Date: 20/08/2015

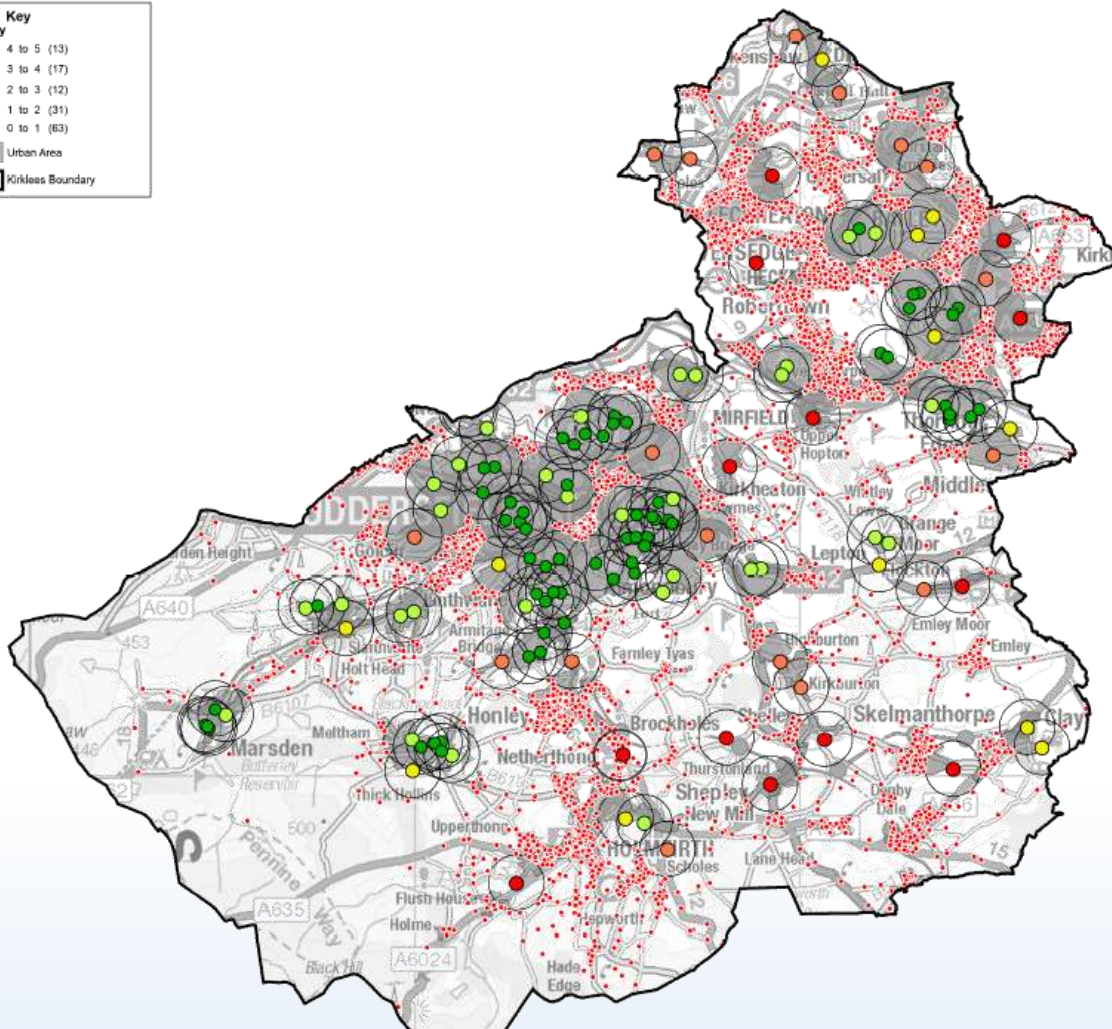
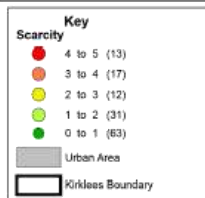
Scale: 1:100,000

© Crown Copyright
and database right
2015.
Ordnance Survey
100019241



Case Study

Allotment Scarcity Analysis August 2015



**Policy
Unit
Geographic
Research and
Information
Team**

Date: 20/08/2015

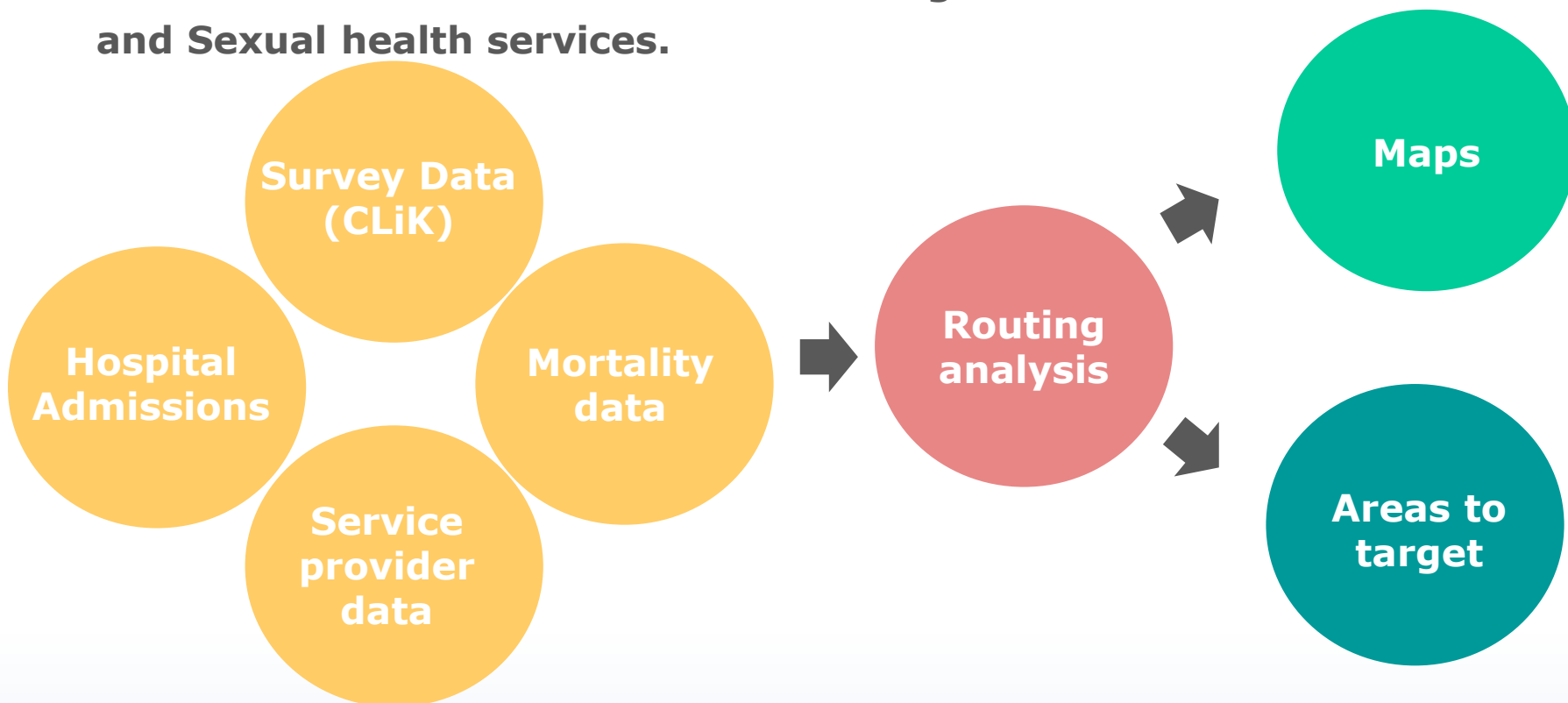
Scale: 1:100,000

© Crown Copyright
and database right
2015.
Ordnance Survey
100019241



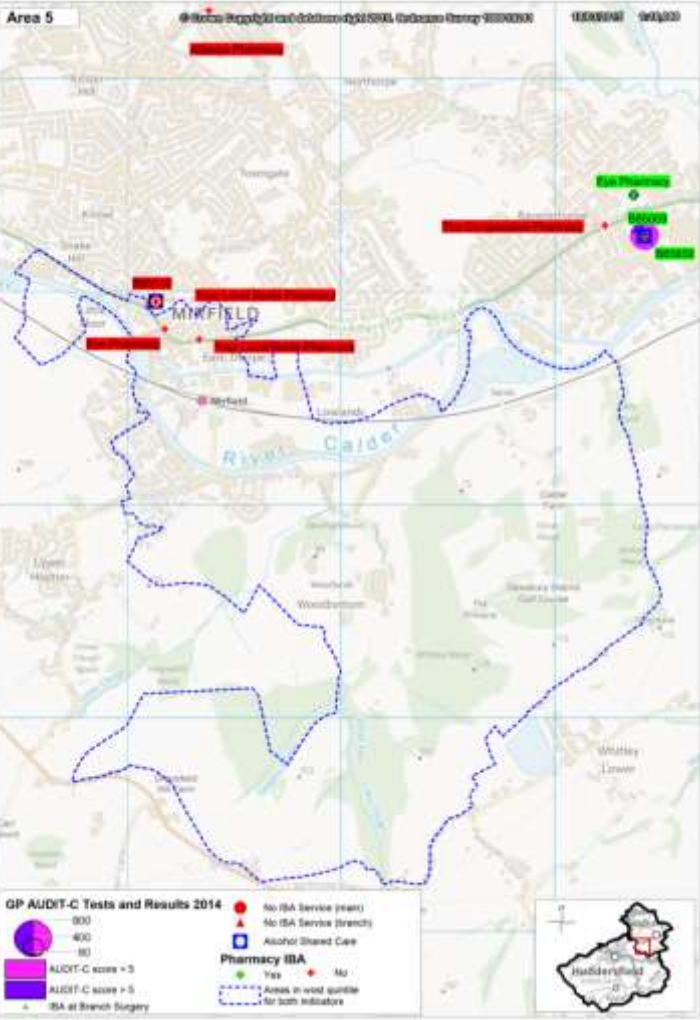
Case Study

Are public health services (GP & Pharmacies) being provided in areas of need? These include Smoking & Alcohol cessation and Sexual health services.

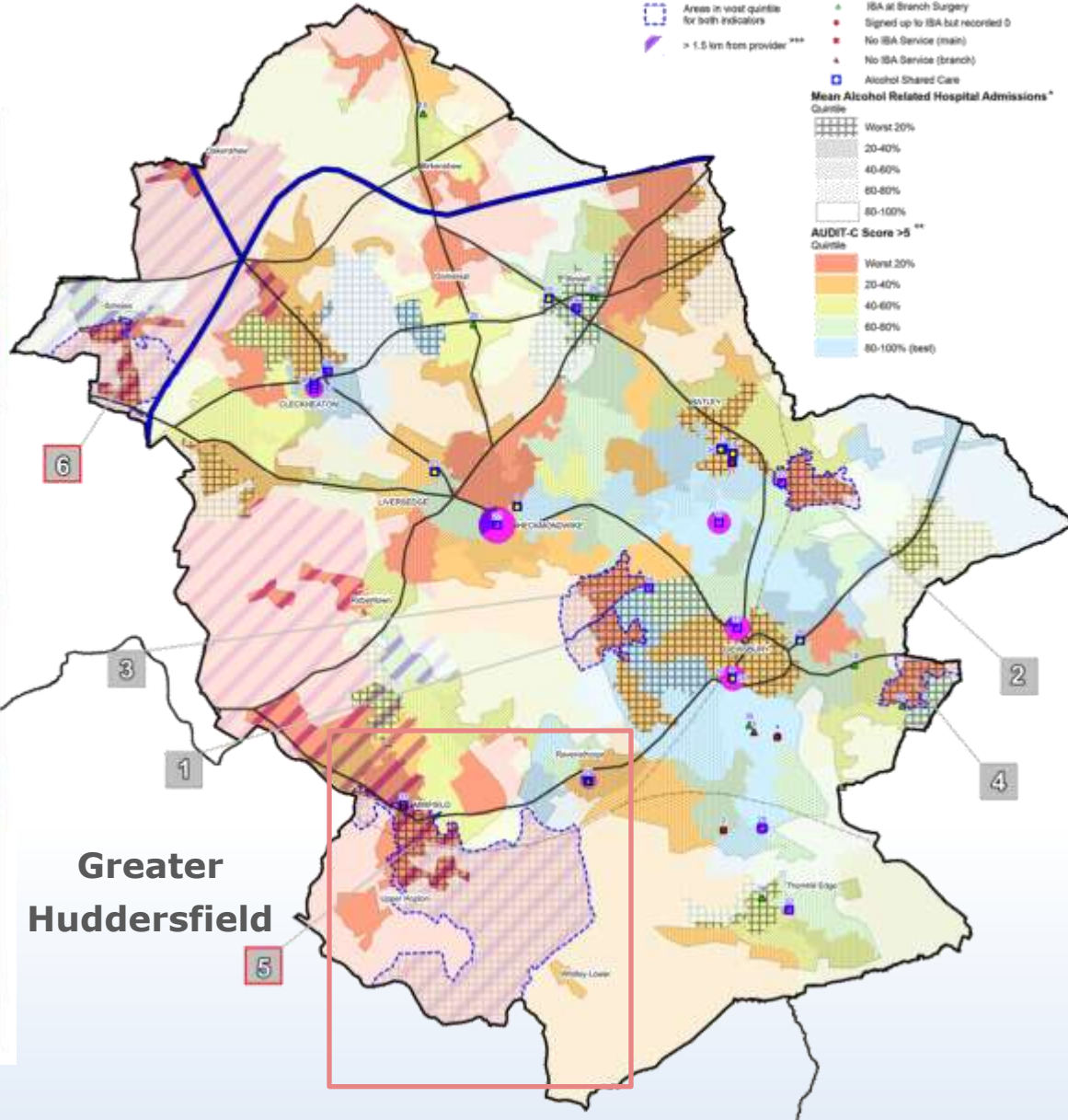


Maps and reports provided to CCG to guide targeting of resources.

Case Study

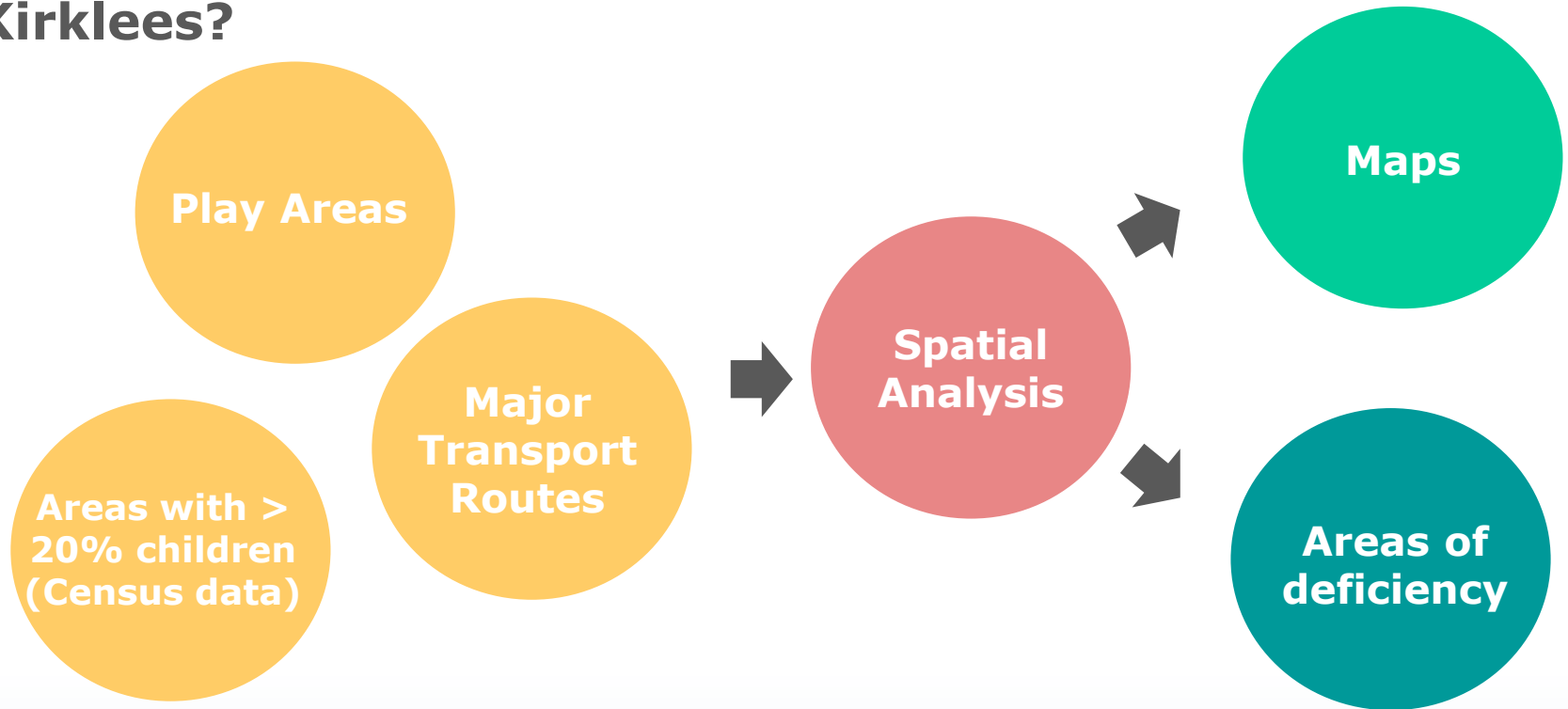


North Kirklees



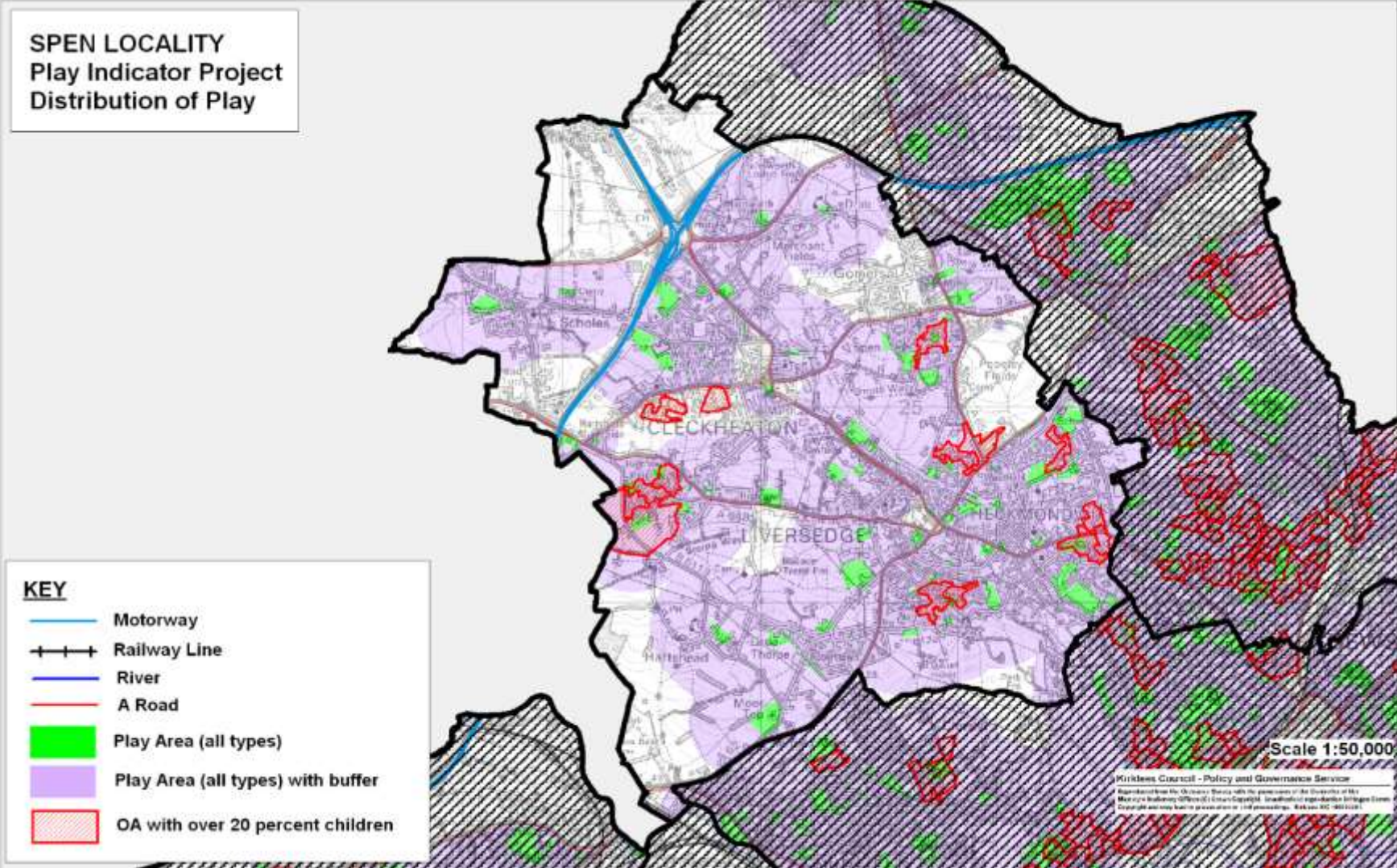
Case Study

Is there sufficient play area provision in Kirklees?

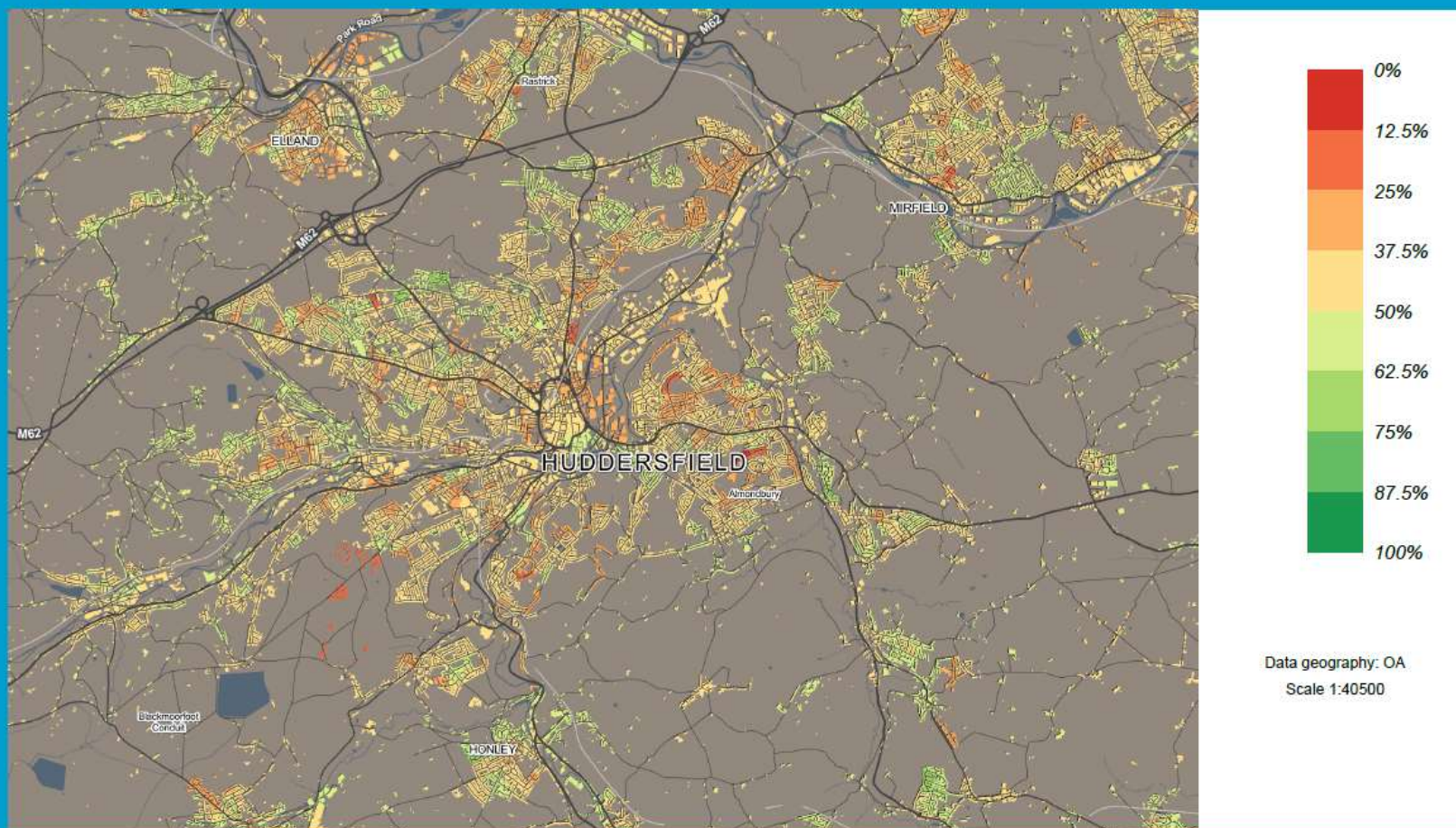


Lottery funding for new games areas and skate parks.

Case Study



Very good health



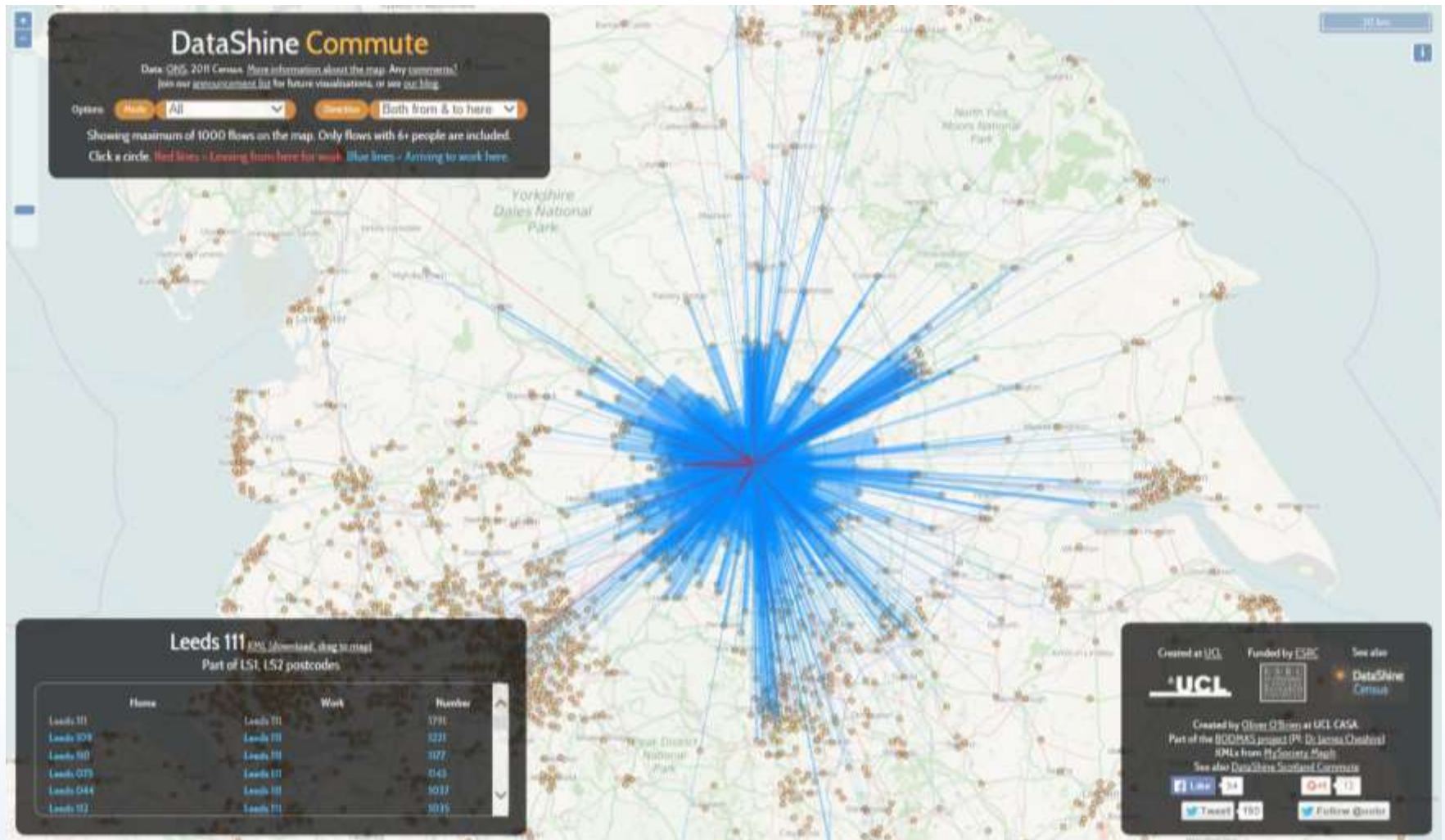
Map shows % of All usual residents.
Census data (c) Crown Copyright Office of National Statistics.
Contains Ordnance Survey data (c) Crown copyright & database right 2014-5.

DataShine is produced by the BODMAS project at UCL.
Visit <http://www.datashine.org.uk/> for an interactive version.

© 2004 Blackwell Publishing Ltd, *Journal of Internal Medicine* 255: 103–110

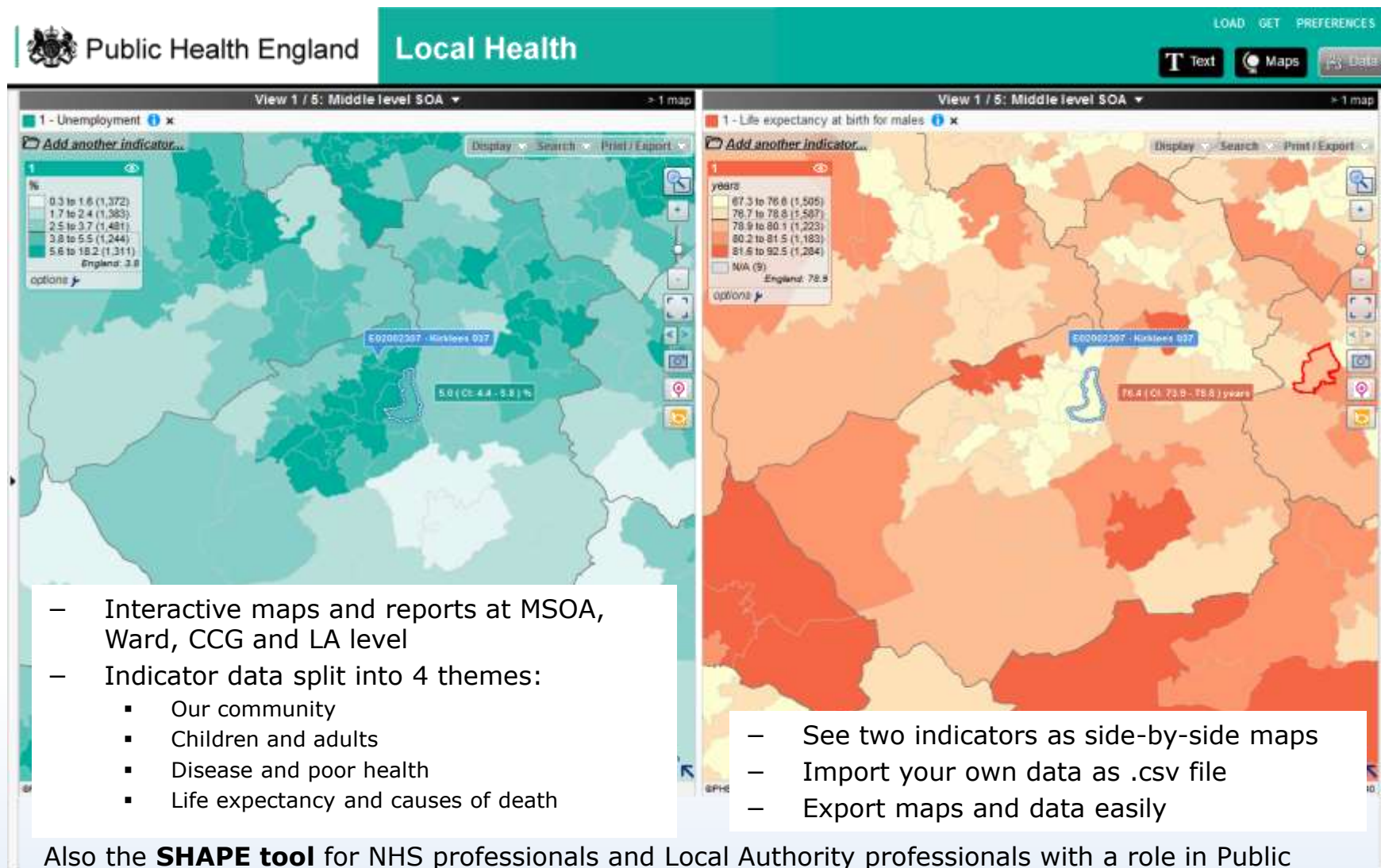
Free Online Tools

DataShine



Free Online Tools

Local Health Tool



- Large database of area based statistics which can be served up as tables, maps and area profiles



Communities



Deprivation



Community
Safety



Economy



Environment



Children,
Families and
Education



Health and
Wellbeing



Population



Housing



Transport



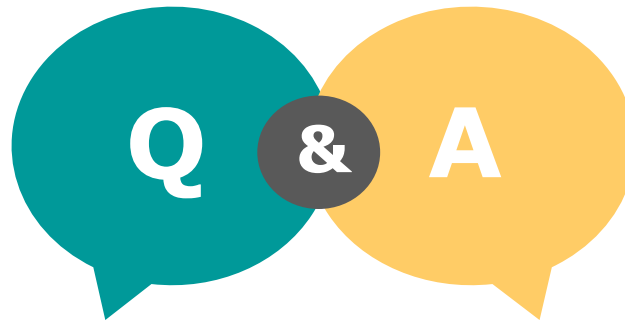
Benefits and
Low Income



2011 Census

Summary

- **Spatial data used widely within local government**
- **Sliding Scale, from plans to infographics**
- **Simplify complex patterns**
- **Easy to relate to**
- **Add context**
- **Better insight**



Thanks for listening!



andrew.fitzpatrick@kirklees.gov.uk



<https://uk.linkedin.com/pub/andrew-fitzpatrick/77/b97/67a>